



*9900 High Demand Systems*



## KIP 9900 SERIES SYSTEMS

*KIP 9900 Systems set a new standard for top quality high demand printing of technical documents. The system delivers nonstop production levels with razor sharp line detail, superior half tones and smooth gradients while decreasing operational and ownership costs.*

*New KIP 9900 wide format systems have been painstakingly engineered to deliver breakthrough quality and performance while providing real value from extremely high quality output, reliable performance and efficient operation.*

### *KIP 9900 Network Printing Systems*

KIP 9900 Series productivity is rated at 7,920 square feet or 1,320 "D" size prints per hour. Four quick change high production decks and integrated bypass sheet feeder, feature a media capacity of over 6,000 square feet for non stop printing.

KIP 9900 network print systems employ highly advanced imaging technologies to deliver outstanding fine line detail, superior half tones and smooth gradients. The KIP 9900 Print Systems address demanding print runs and compressed delivery times with the highest quality expectations in virtually any digital imaging environment.



*KIP 9900 Network Printing Systems*

### *Space Saving KIP 9900 Multifunction Systems*

KIP 9900 Print copy and scan systems accurately reproduce technical documents at astonishing speed in true 600 dpi optical resolution. The KIP 9900 configured with the KIP 600A scanner delivers maximum digital imaging quality and performance while reducing the total system footprint. The system automatically senses the original document width and dynamically adjusts exposure settings during the scanning process for maximum quality.

Documents containing lines, text, renderings, grayscales and aerial photos are easily scanned in to a variety of formats including single and multi-page PDF and DWF files.



*KIP 9900 Multifunction Systems*

## *KIP 9900 Mono/Color Production Systems*

KIP 9900 production systems with KIP 2300 scanner provide modular, high demand mono & color solutions for the most discerning reproduction centers. A range of professional grade KIP software also delivers color management features and powerful image editing tools that perform difficult tasks easily and with consistent results from one job to the next.

Due to a highly advanced design, KIP 9900 production systems reproduce complex graphics and photos as accurately and effortlessly as simple line drawings.

KIP 9900 production systems set a consistently high standard for speed, quality and flexibility in a digital image capture system.

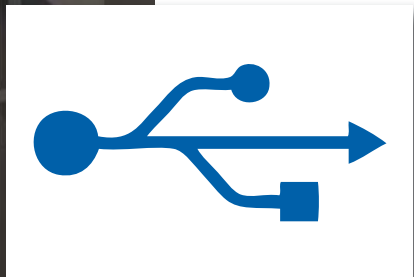
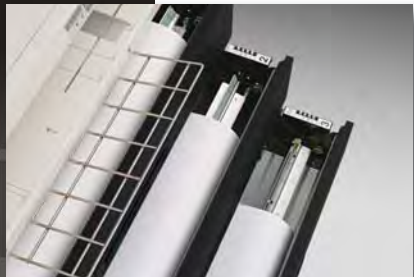
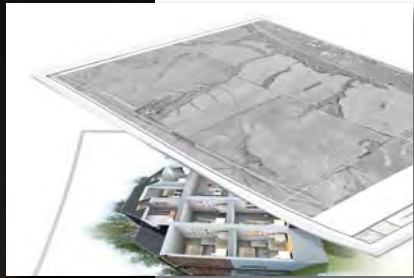
A durable design combined with top quality construction materials ensure long term reliability with consistent copy and scan quality in the most demanding mono & color imaging production environments.



*KIP 9900 Multifunction Production Systems*



## KIP 9900 SYSTEM ADVANTAGES



### *Outstanding Value*

At KIP, we believe value makes the difference. We incorporate the most advanced technologies into every KIP system; technologies that provide the lowest in class cost of operation, best in class ease of use, the highest level of flexibility and expandable designs that offer space saving single footprint configurations.

### *Key Features*

- Lowest in class cost of operation
- 100% toner efficiency
- Space saving design
- Illustrated operator guides on touchscreen
- Efficient software workflow
- Integrated accounting system

### *High Resolution*

Enhanced 600 x 1800 dpi Imaging Technology realistically renders accurate grayscale information and fine line capabilities to satisfy the most exacting quality standards. Color documents are easily scanned into digital files or high fidelity copies when the system is integrated with KIP scanners. The KIP 9900 systems deliver consistent print quality from print to print and job to job. Dense, solid blacks in high fill areas exhibit none of the streaking that is often found in competitive systems producing large areas of continuous tone printing. KIP 9900 produce excellent mid-tones and smooth gradients for great results on tricky areas such as solid fills and halftones.

### *Powerful Multi Thread Processing*

A unique multi-threaded approach to processing, gives the KIP 9900 a production boost that assists in high demand printing of multiple jobs containing multiple sets. Individual processing threads that convert images for printing are handled by the KIP 9900 in tandem. On multi-core (multiple CPU) systems, such as the KIP 9900, threads can be spread across the cores of the processor. The implementation of this RIP technology provides a 25% production advantage over traditional RIP systems.



### *Maximum Production*

KIP 9900 systems deliver consistent print quality from the first page of a print job to the last and from one job to another. Demanding print runs and compressed delivery times coupled with the highest quality expectations are satisfied by these new systems. Excellent across the board performance is sure to satisfy the most stringent demands on quality and top productivity.

A state-of-the-art print unit maintains system productivity while ensuring maximum uptime to make every minute productive. Advanced self diagnostic systems eliminate potential print delays by providing designated operators with system status alerts via Email if paper or toner replenishment is needed.

### *Key Features*

- High resolution, 24-Bit color image quality
- Copy directly to inkjet printers or create color digital files
- Concurrent digital print and scan
- Replace media and toner “on-the-fly”
- Advanced grayscale management
- Fine line image enhancement

### *Advanced Technology*

KIP 9900 systems comprise an advanced range of monochrome and color printing, copying and scanning solutions optimized for economical output. The finely tuned interaction of all KIP software components maximizes the efficiency of production workflows, offers greater ease of use and accelerates the entire job production cycle. These solutions offer industry leading print speeds with high-capacity paper handling and high yield toner cartridges, as well as a wide range of features for greater productivity, media versatility, networkability and flexible system configurations.

### *Key Features*

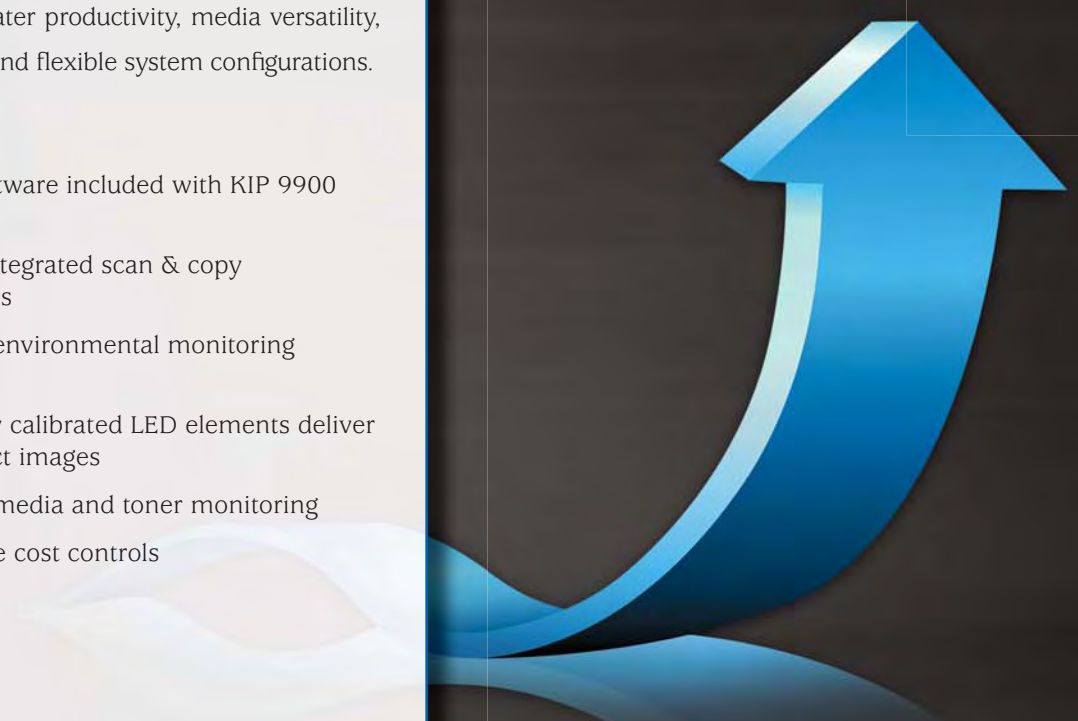
- KIP 7.0 software included with KIP 9900 systems
- Range of integrated scan & copy technologies
- Automatic environmental monitoring systems
- Individually calibrated LED elements deliver pixel perfect images
- Automatic media and toner monitoring
- Dependable cost controls

# KIP 9900

**39,600**  
'D' size / week

**7,920**  
'D' size / day

**1,320**  
'D' size / hour



# KIP 9900 SERIES NETWORK PRINT SYSTEMS

## *Key Features*

- Integrated touch screen with advanced user management
- 600 x 1800 dpi Imaging Technology
- 100% toner efficiency
- Energy Star qualified
- Automatic environmental compensation for temperature and humidity
- PC and web based submission tools included with each system
- Certified application drivers incorporate accounting functionality

## *KIP 600 x 1800 DPI Imaging Technology*

The KIP 600 x 1800 dpi Imaging Technology provides maximum print quality to satisfy the demands of modern CAD design. The KIP 600 x 1800 dpi Imaging Technology creates greater definition in print quality, particularly with grayscale, imbedded photos, arcs and curved line reproduction.

The KIP 600 x 1800 dpi Imaging Technology is a standard feature in the KIP 7700/7900 and 9900 series printing systems.

## *Monochrome Printing*

KIP 9900 systems maximum print production based on patented KIP High Definition Print Technology. HDP is an innovative approach to wide format printing that has redefined the standard for high production print quality.

KIP 9900 systems deliver consistent print quality from the first page of a print job to the last and from one job to another. Dense, solid blacks in high fill areas exhibit none of the streaking that is often found in competitive systems producing large areas of continuous tone printing. The KIP 9900 produces excellent mid-tones and smooth gradients for great results on tricky areas such as solid fills and halftones.

The KIP 9900 features a robust new braking system designed to ensure uniform sheet sizes from all four media rolls at extremely high speeds. Advanced technologies that include automatic environmental compensations and new brush-based developer units keep your print quality on track through seasonal climate changes, regardless of geographic location.

KIP 9900 print systems address demanding print runs and compressed delivery times with the highest quality expectations in virtually any digital imaging environment and can be easily upgraded to incorporate monochrome and color copying and scanning.



## *KIP 9900 Series Network Print System Features*

- 22 'D' size prints per minute from 4 integrated media rolls
- Ultra fast processing and file conversion speed
- Integrated touch screen with advanced user management
- PC and web based submission tools included with each system
- Certified application drivers incorporate accounting functionality

# KIP 9900 MONO/COLOR MULTIFUNCTION SYSTEMS

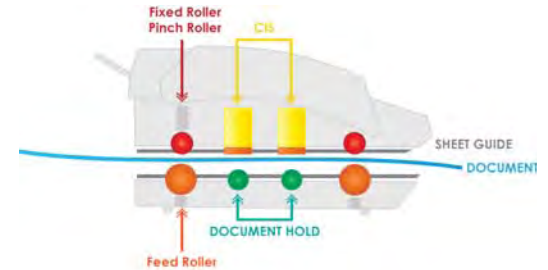
## Monochrome Copying & Scanning

KIP 9900 systems with KIP 600A scanner handle the full spectrum of monochrome and color scanning applications making it ideal for technical imaging as well as full color graphics. In addition, KIP 9900 systems provide the capability to scan to network PC's, web based plan room applications and removable media

drives. A range of convenient preset quality controls are available to assist operators with making proper compensations and the system dynamically adjusts exposure settings while scanning.

## KIP Color Direct- Scanning, Copying & Printing

Color scanning, copying and printing is accomplished directly from the KIP touch screen display with preset selections for image quality, file naming, copy or print count, image sizing, and rotation. KIP Color Direct delivers world class color scanning, copying and printing directly to industry standard inkjet printers that have been fully integrated with KIP 7.0 software.



The KIP 600A scanner features a support system to enhance feed reliability



Perform all scan, copy and print functions using the integrated touchscreen user interface



## KIP 9900 Mono/Color Multifunction System Features

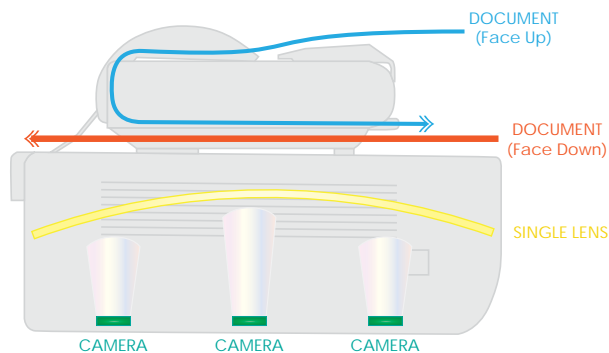
- Single, space saving system footprint with no need for additional PCs
- Create color copies directly to inkjet printers
- Scan documents into a wide range of monochrome and color file formats
- Image presets with real time copy and scan previews provide maximum quality control

# KIP 9900 MODULAR PRODUCTION SYSTEM

## *Production Imaging*

KIP 9900 systems with KIP 2300 scanner are professional grade monochrome print and mono/color copy & scan solution that provides high demand users with the ultimate in imaging technology.

KIP 9900 production systems set a uniquely high standard for speed, quality and flexibility in a digital image capture system. Best in class productivity is achieved from advanced CCD image capture and new KIP Tru•Speed Technology for high speed throughput without delays. World-class flexibility is delivered via the ability to scan face up or face down and scan thick mounted originals and single sheets of paper from a single unit.



*Three independent imaging cameras with an advanced laser alignment system and self-calibrating diagnostics provide an extraordinary level of quality.*

## *Enhanced Monochrome Image Quality*

KIP 2300 imaging technologies create crisp black and white prints, copies and scans of technical drawings, photographs, maps and renderings. An advanced grayscale mode is ideal for accurate photo reproductions

## *World Class Color Quality*

Best in class productivity is achieved via an advanced tri-linear camera based image capture unit. Outstanding image quality is delivered through the innovative use of bright white LED light sources for illumination and 600 x 600 dpi resolution.

## *KIP CPS Center Applications*

The included KIP CPS Center software is an easy to use suite of applications suitable for both simple and advanced copy, print and scan functions. This software suite is designed to streamline all imaging functions in high demand environments by providing easy access to all monochrome and color features while minimizing operator effort related to tasks such as image naming and digital file management.

For use with dual footprint KIP system configurations, KIP CPS Center applications are designed to operate



on a dedicated PC workstation to provide complete control of all copying and scanning tasks. In addition, the KIP CPS Center applications give users the ability to manage the print queue, monitor system status and perform monochrome printing operations.

KIP CPS Center applications provide total control of the copying, printing and scanning process. The software supports a wide range of inkjet printers, enabling multiple configuration possibilities to create an optimized workflow solution. This approach ensures flexibility for future system upgrades and capability expansions.



### KIP 2300 Key Features

- Ultra fast imaging with KIP Tru-Speed technology
- Dual feed flexibility-face up or face down scanning
- 24 bit RGB true color image capture
- Thick/mounted stock support with integrated document support system
- Visual operator feedback system for productive stream-scanning
- Extended optical system warranty

### Mono/Color Imaging Key Features

- Mono scan speeds up to 12" per second!
- Color scan speeds up to 6" per second!
- High resolution, 24-Bit color image quality
- Advanced KIP imaging technologies deliver superior results
- Copy & print directly to inkjet printers or create color digital files
- Easy system calibration process ensures color copy, print & scan accuracy
- Increase system functionality with optional KIP Color Pro software

### KIP 2300 Mono Scan Speed

DPI	Monochrome Scan Speed	
600 x 600	5" / sec	25' / min
400 x 400	7.5" / sec	37.5' / min
300 x 300	10" / sec	50' / min
200 x 200	12" / sec	60' / min

### KIP 2300 Color Scan Speed

DPI	Color Scan Speed	
600 x 600	2" / sec	10' / min
400 x 400	3" / sec	15' / min
300 x 300	4" / sec	20' / min
200 x 200	6" / sec	30' / min



*KIP Tru•Speed Technology boasts superior transmission rates of up to 2.38 Gbits/s, ensuring the scanner hardware operates at full speed with no delay times due to data transfer.*

### KIP Color Pro Software

This powerful software package delivers advanced copying and scanning features and also includes the ability to RIP files to print. Users may print in monochrome or color to multiple printers, ensuring speed, flexibility and accurate production of high-quality color copies.



### KIP Color Pro Imaging Features

- Custom Quality Filters
- Image Editor
- Image Deskew
- Image Despeckle
- Image Nesting
- Area Crop
- Wipeout / Mask
- Paneling
- Color Management
- Print to Inkjet (RIP)
- Print Collated Color Sets
- Scan to E-mail



*Optional KIP Color Pro provides advanced copying, scanning and printing of all monochrome and color documents.*

# KIP 7.0 PRINT MANAGEMENT APPLICATIONS



## *Touchscreen Productivity*

KIP systems eliminate the need for additional PC hardware by printing documents directly from the touchscreen software. Scanned images can be easily recalled and printed from the touchscreen mailbox storage system or may be concurrently printed during scan to file operations.

Integrated support for removable media such as standard USB drives provides the ability to print documents from a range of media formats, as well as scan documents directly to them.

## *Touchscreen Key Features*

- Print directly from removable USB based media storage drives and system mailboxes
- Concurrent print and scan to file at the touchscreen display
- Secure, centralized data storage & access
- Integrated print previews of each file within a complete job set

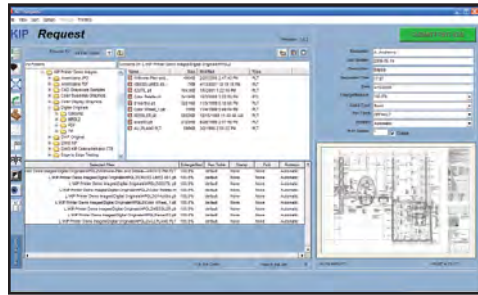
## *Network Versatility*

**KIP Request** is an easy-to-use application designed to provide operators with a fast and accurate means of producing high quality print sets from all types of wide format digital files. Operators benefit from complete command over production workflow, based on a host of powerful printing and print management tools.

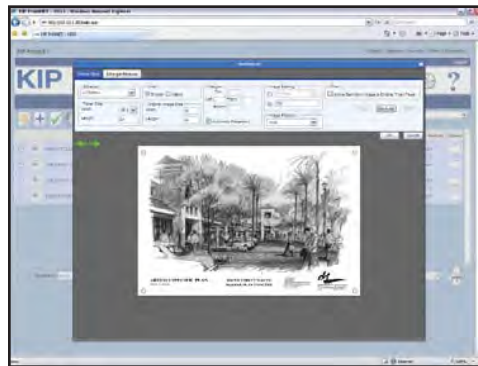
## *Total Web Solution*

**KIP PrintNET Client** delivers powerful Image preflight, file settings, job creation, accounting standards, queue management and system administration features through any web browser without the need to install specialized applications on network PC's.

The advanced, cross-platform PrintNET viewer is operating system independent, quickly displaying images in crisp grayscale for precise graphics, photos and fine lines. Integrated image viewing provides instant file authentication and an accurate representation of the final printed product, complete with custom image settings.



*KIP Request user interface*

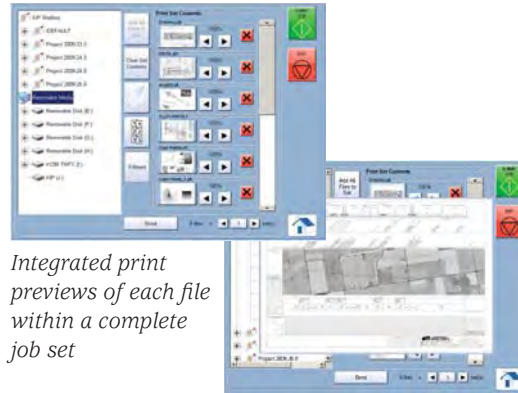


*View all files before printing with KIP PrintNET*



### *KIP Request & PrintNET Key Features*

- Integrated viewing displays accurate photos, graphics and fine lines
- Apply printing preferences on a per-file basis or to a complete print job
- Accurate file format detection
- Individual, departmental and project specific accounting information is collected
- Fast file processing for maximum productivity

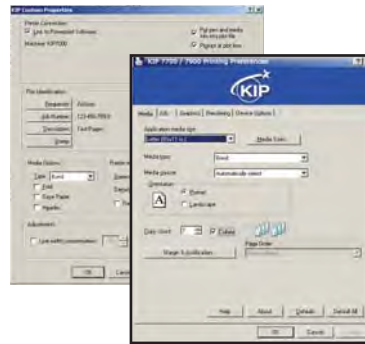


*Integrated print previews of each file within a complete job set*

### *Integrated Application Drivers*

The Microsoft® Certified KIP Windows® driver enables direct printing from Windows based applications and supports advanced features including set collation, fast spooling for multiple copies or sets, data tracking for job accounting and media selection.

The KIP AutoCAD driver enables printing directly from AutoCAD® applications. The Autodesk certified application driver offers precision printing of complex technical drawings, powerful data tracking by username and job number. To assist in making printing decisions, two-way printer communication allows operators to monitor toner and paper status.



*Windows and AutoCAD Drivers*



*KIP Printing Systems Certifications*

### *Microsoft Certified KIP Windows Driver Features*

- 2-way communication with KIP 9900 system
- Displays current media information and real time system status
- Print in monochrome and grayscale
- Selection of folding parameters
- 64-Bit operating system compatibility
- 1 - 999 copies or collated sets
- Label documents with user name, job number and data tracking information
- Job accounting and data tracking includes user name, job number and data tracking information
- Print from design, project management and markup applications

### *KIP AutoCAD Driver Features*

- HDI drivers for AutoCAD
- Displays current media information and real time system status
- Raster image control to adjust gamma and density levels for embedded raster data
- Data tracking for job accounting including user name, job number, and description fields
- User and job number passwords may be required before printing
- Select bond, vellum, film or custom media
- Image stamping allows placement of text and/or stored images anywhere on the document

# KIP 9900 SERIES SYSTEM OPERATIONS



KIP 9900 Series touch screen interface



On demand illustrated operator guides



Integrated viewing & printing

## Touchscreen Controls

The integrated KIP touchscreen operator panel provides the ultimate in copy, scan and print technology right at your fingertips. KIP systems eliminate the need for additional PC hardware by printing documents from removable media such as standard USB drives, network drives, & scan mailboxes directly from the touchscreen interface.

## Unified Accounting System

All KIP printing, copying, and scanning applications are connected via an integrated system designed to record and account for use of all system functions. Customizable reports detailing total system usage are delivered via E-mail on demand or at designated intervals.

## Easy Administration

In addition to the meticulously designed interface, users and administrators benefit from an array of sophisticated, easy-to-use queue management and accounting tools designed to meet today's most challenging network security demands.

## Information Center

The KIP 9900 is configured to display contact information specific to the KIP authorized service provider. This feature is designed to assist operators when requesting consumables, service calls and system upgrades.

## System Guides

The KIP 9900 operator panel displays illustrated guides to explain system operations including mono/color copy and scan-to-file functions. In addition, step-by-step media and toner replacement procedures are automatically displayed when necessary to provide users with system instructions.

The KIP System Guide is available at the KIP 9900 operator panel and downloadable via KIP PrintNET to assist operators by providing a quick reference resource for all KIP application features.

## System Upgrades

Each configuration may be easily field upgraded to provide new system features at any time, including mono/color scan-to-file and copy.

### *KIPFold 9900*

The KIPFold 9900 system automates document finishing requirements by providing folding, stacking and collation in a compact design. The system intelligently communicates with KIP 9900 systems and is fully integrated with all KIP copying and printing applications and drivers to provide seamless workflow integration.

### *KIPFold 9900 Packet Standards*

- Architectural Print Sizes: 12" x 18", 18" x 24", 24" x 36", 36" x 48", 30" x 42"
- Engineering Print Sizes: 11" x 17", 17" x 22", 22" x 34", 34" x 44"
- Metric Print Sizes: A3 - A0
- Folded Packet Sizes: 8.5" x 11", 9" x 12" or 210 mm x 297 mm
- Margin: 0" - 2", 0 - 50 mm user selectable
- Packet Orientation: Portrait or Landscape (Arch., Eng.) Portrait (Metric)

### *Fold Types*

The KIPFold 9900 provides the flexibility to fold copies and prints into all architectural, engineering and metric standard packet sizes. Prints are accepted in either landscape or portrait format, allowing for fast and efficient folding operations. In addition, users may specify individual packet orientation - either landscape or portrait.

### *KIP Stacking Solutions*

Consistent, accurate and reliable KIP stackers deliver neatly stacked and collated document print sets. From simple print catchers to intelligent online stacking systems, KIP solutions can be easily tailored to suit your exact needs, while maintaining the flexibility to grow as demands increase.



*KIP 1200 Stacker Stacks  
1000 A-E size prints*



# KIP 9900 SERIES CONFIGURATIONS



*KIP 9900 Network  
Print System*



*KIP 9900  
Multifunction System*



*KIP 9900 Production Systems*

## KIP 9900 NETWORK PRINT SYSTEM

Function	Standard	Optional
Mono Network Printing	✓	
Touchscreen User Interface	✓	
PC Based Submission Application	✓	
Web Based Submission	✓	
Windows Certified Drivers	✓	
Autocad Drivers	✓	
Unified Accounting	✓	
DWF Printing	✓	
DWF Multi Page Scanning	✓	
System Administration Functions	✓	
PDF Sets Printing		✓
KIP Fold		✓

## KIP 9900 MULTIFUNCTION SYSTEMS

Function	Standard	Optional
Mono Network Printing	✓	
Touchscreen User Interface	✓	
PC Based Submission Application	✓	
Web Based Submission	✓	
Windows Certified Drivers	✓	
Autocad Drivers	✓	
Unified Accounting	✓	
DWF Printing	✓	
DWF Multi Page Scanning	✓	
System Administration Functions	✓	
Mono Copying	✓	
Mono Scanning	✓	
Direct Color- Scan		✓
Direct Color- Copy to Inkjet		✓
Direct Color-Printing to Inkjet		✓
PDF Sets Printing		✓
KIP Fold		✓

## KIP 9900 PRODUCTION SYSTEMS

Function	Standard	Optional
Mono Network Printing	✓	
Touchscreen User Interface	✓	
PC Based Submission Application	✓	
Web Based Submission	✓	
Windows Certified Drivers	✓	
Autocad Drivers	✓	
Unified Accounting	✓	
DWF Printing	✓	
DWF Multi Page Scanning	✓	
System Administration Functions	✓	
Mono Copying	✓	
Mono Scanning	✓	
Direct Color- Scan & Copy to Inkjet		✓
Direct color-Printing to Inkjet		✓
PDF Sets Printing		✓
KIP Color Pro Software		✓
KIP Fold		✓



*Complete product  
specifications available  
online at:*

*[www.kipamerica.com](http://www.kipamerica.com)*

## THE COLOR OF KIP IS GREEN

### *Engineered for Sustainability*

The greatest environmental impact of KIP products is through the actual operation of our products and solutions. Our goal is to improve the customer experience by integrating environmental considerations into our business strategy – resulting in superior products.

Customers increasingly value environmental aspects of products, such as energy efficiency, emissions reduction and the ability to recycle exhausted supply containers. We differentiate our products by integrating such features to deliver a low total cost of ownership and an improved user experience.

In packaging, we strive to minimize the overall use of materials, utilize recycled and recyclable materials when possible and reduce packaging size and weight to minimize transportation fuel impact.

KIP factories operate in full compliance with the strict code of the ISO 14001 Environmental Management Systems Standard, which provides the requirements for organizations wishing to operate in an environmentally sustainable manner.



*KIP is committed to product designs that promote environmental health and sustainability. Our goal is to consistently improve and refine the technologies in KIP products to keep our planet green.*

### *KIP Printers and Systems Feature These Earth Conscientious Aspects:*

- Energy Star Qualified
- ROHS Compliancy
- ISO 14001 Standards
- Ozone Emissions Filters
- UL/UL-C Approved
- 100% Toner Efficiency – No Waste Toner
- Organic, Recyclable Photoreceptors
- Recyclable Toner Containers
- Prints on Recycled Paper
- Automatic Image Rotation and Media Selection Ensure Minimal Paper Waste



THE COLOR OF  
KIP IS GREEN



Please contact Repro Graphix  
for more information.



**INDIANAPOLIS**

437 N. Illinois St. Indianapolis, IN 46204  
p: 317.637.3377 f: 317.637.3415

**EVANSVILLE**

14 NW 6th St. Evansville, IN 47708  
p: 812.422.2400 f: 812.422.5388



KIP is a registered trademark of the KIP Group. All other product names mentioned herein are trademarks of their respective companies. All product features, prices and specifications are subject to change without notice. Complete product specifications are available at [www.kipamerica.com](http://www.kipamerica.com)